

68BA Battery Adapter

© Brooke Clarke

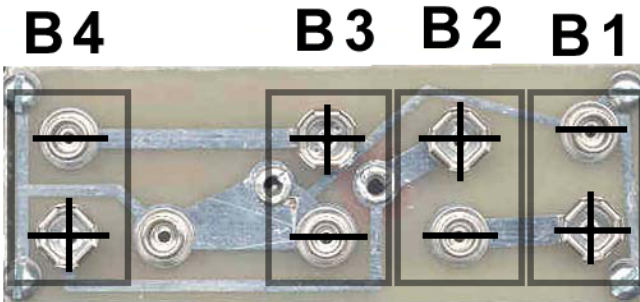
Installation

Install the 68BA on the bottom of the radio using the 4 provided screws. This is an option that makes it easier to remove the batteries rather than removing the adapter.

Using 9 Volt Batteries

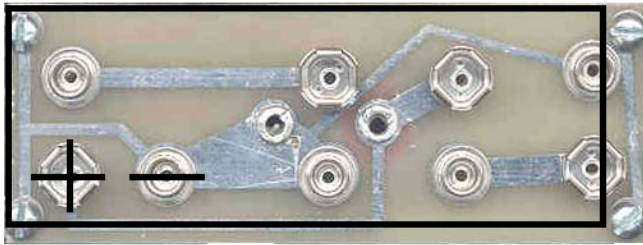
There are two possible configurations of 9 Volt batteries:

Two each can be connected to B1 and B2 or B3 and B4, or Four each connected to B1, B2, B3 and B4.



Using AA Batteries

There are two configurations for AA batteries: Ten each in a single battery holder or



Twelve each in two battery holders.

Install the small printed circuit board between the battery positive (+) terminal and the positive (+) terminal of the battery holder with the wires going down (red wire side of the PCB to battery holder positive).



Place foam packing in the bottom of the battery box to support the batteries.

User Modification for use with PSR-2 Chemical Alarm



The two white lines are filing guides for rounding the two lower corners so that the adapter will fit the PSR-2. Version 6S printed circuit boards.

sheet revised 23 Jan 2007